



Saint Joseph the Worker Catholic Church
Warrenton, NC
Interior Design - Liturgical Aspects

August 14, 2017

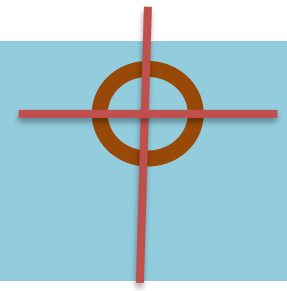
Liturgical Focus

The focus of the interior design of St. Joseph the Worker Catholic Church will emphasize the importance and meaning of the celebration of the liturgy.

- Focus on the celebration of the Holy Eucharist
- Clear lines of view to the celebration
- Simple design to minimize distractions
- Natural hues provide a bright and welcoming atmosphere
- Cohesive design flowing through the entire church links elements of the existing building to the new

Much study has been given to the liturgy and the furnishings to support it. A task force of parishioners was formed to learn about the meaning and mystery of the various liturgies; to select liturgical furniture which support the liturgy; and to ensure that the space is conducive to the appropriate celebration of the liturgy. Resources consulted listed in the appendix.

Circle of the Trinity



- The Trinity, a circle of ever-flowing and never-ending love is a key accent within our design.
 - Existing stained glass windows will be used in our new church. Each has a cross with a circle around the center
 - Four circular windows in our new church accentuate this element and allow natural light
 - Furniture complements the Trinity circle with soft simple curves



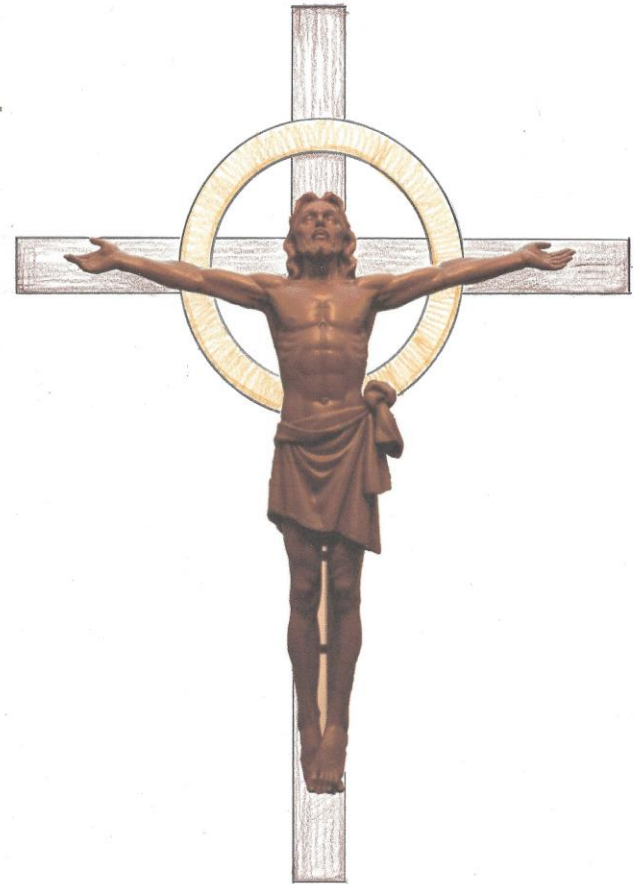
Altar and Ambo

- Rectangular, with soft half curves, complementing key design elements
- 5 - feet in length
- Altar and Ambo the same design
- Lectern is a closed pedestal located outside of the sanctuary in front of the choir to the right of the altar



Corpus and Cross

- Our Crucified Lord
“Christ Crucified - Christ Risen”
with Sunrise
- Its proportion and suspension
over the altar, make it easily
visible to the faithful assembly
 - 7’7” X 5’8”
- Bronze circle aligns:
 - Circle design
 - Same metal as the Font
- Cross complements the wood
within the Nave

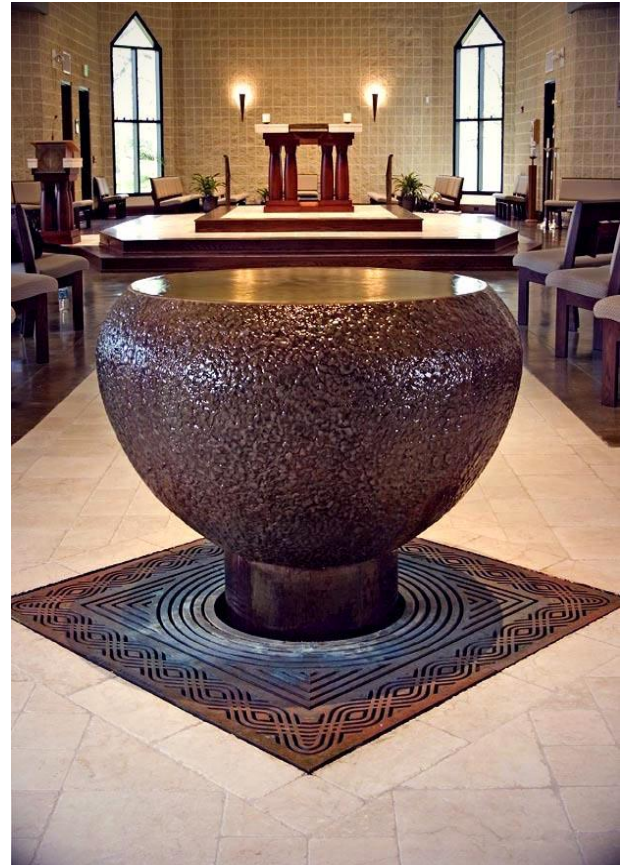


@JeyHollCarpenter
9 JAN 2017

“Christ Crucified,
Christ Risen”
With “Sunrise” Cross
7’7” x 5’8” 5

Baptismal Font

- Continual flowing waters of Baptism
- Allows for full immersion of infants
- 33" hand hammered bronze to provide a natural simple look
 - Complements the bronze circle on the Cross
- Grate covers return pool
 - Water source will be plumbed during construction. Pump and purification system housed in sacristy
- Located at the front of the Nave to allow the faithful to bless themselves as they enter



Jordon Warner, sculptor

Stations of the Cross

- Bronze 11"W x 12"H
- Sculpted scenes depicting the 15 stations of the Passion of Christ
- The design complements the Font and Corpus & Cross

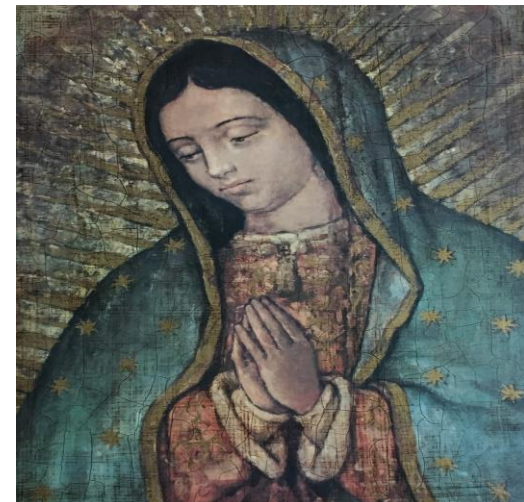
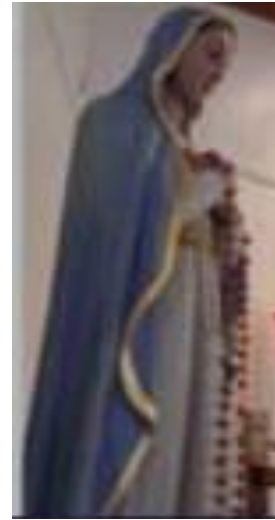
Click on link below to see a view of the stations



THIS ONE! Bronze Stations (1).pdf

Sacred Images

- Statue of Blessed Virgin Mary and Saint Joseph:
 - Each about 40” in height
 - Revered items from the existing church and on the right and left of the altar, but clearly set apart
- Our Lady of Guadalupe:
 - Painting from Mexico, donated by a parishioner
 - Displayed in honor, respect and welcome of the growing number of Hispanic families joining St. Joseph’s
 - Located in a place of honor with kneeling bench in the Narthex



Pews

- Engineered overlapping hardwood providing a stronger pew with a natural finish
 - Cherry finish, same as Altar and Ambo
- Curved end with simple etched Cross
- Fold down kneelers



Prayer for Building our New Church

Almighty God, Divine Architect, Creator of our Human Family;
Rise Jesus, Corner Stone of our Faith, Lover of us all;
Spirit of Wisdom, Builder of community, Our inspiration and
Guide;

You call us to build up Your Kingdom.

Bless us with generous hearts, open minds, greater unity,
renewed visions, as we seek to build a house for celebration and
worship.

May it be a home where all are welcomed, nourished, and
empowered to be Christ for others.

Be with us and guide us in our efforts to serve you.

Amen



Appendix

Liturgical Reference Materials

Throughout the process, in addition to consulting with our Pastor, Fr. John Gillespie, we reviewed and consulted such texts as:

- “General Norms for the Celebration for the Sacred Liturgy of the Mass in the Forma Ordinaria” – Diocese of Raleigh
- “Norms and Guidelines For Design” (Liturgical Aspects) – Diocese of Raleigh
- “The Constitution on the Sacred Liturgy”, Vatican II, December 4, 1963
- “Understanding the Sacraments Today” by Fr. Lawrence Mick
- “The Mass – 101 Questions and Answers” by Fr. Kevin Irwin
- “A Biblical Walk through the Mass” by Dr. Edward Sri
- “The Power of Daily Mass” by Mr. Bert Ghezzi
- Numerous web sites on liturgical design and architecture